

**JILLIAN F. WITHEE**



Interior Design Portfolio

# RESUME

## Design Experience

---

**Designer/Sales Associate**  
Kitchen Classics, LTD. - Urbandale, IA  
May 2009 - December 2009

Planned and prepared AutoCAD drawings of kitchens, bathrooms, offices, bars, and other built-in cabinet designs.

Designed custom cabinet details for manufacturing and assembly.

Assisted clients in the selection of finishes, plumbing fixtures, lighting, flooring, and counter tops.

**Design Assistant**  
Janet Flack Interiors - Wyoming, PA  
October 2007 - November 2008

Notable projects included: redesign of a hotel bridal suite; residential new construction design of five bathrooms; kitchen and bathroom remodel in an 19th century Victorian home.

Met with clients to develop programming requirements for residential and commercial design projects.

Translated concept sketches into detailed construction documents.

Coordinated with sub-contractors and suppliers.

Organized large design library and met with sales representatives.

## Other Experience

---

**Administrative Officer**  
Homeland Energy Ventures - Wilkes-Barre, PA.  
August 2006 - August 2007.

**Industrial Engineer/Business Analyst**  
Intel Corporation - Santa Clara, CA.  
October 2001 - August 2004.  
July 2005 - July 2006.

## Contact Information

---

Address

Mobile

E-mail [jillian@jfrancesdesign.com](mailto:jillian@jfrancesdesign.com)

URL <http://www.jfrancesdesign.com>

## Education

---

**MA Interior Design, December 2012.**  
Iowa State University; Ames, IA.  
GPA: 3.86/4.0

**BS Industrial Engineering, June 2001.**  
Minor in Latin.  
Lehigh University, Bethlehem, PA.  
GPA: 3.37/4.0.

## Skills

---

AutoCAD, AutoDesk Revit.

Google Sketchup.

Photoshop, Illustrator, InDesign.

Advanced Excel Programming.

HTML, CSS, WordPress.

## Interests

---

Owns and operates hand-crafted jewelry business.

Graphic design, web design.

Blogging, social media, creative writing.

Small business development.

# Luxury Town Home Project

15 Central Park West  
New York, New York

A Blending of Neoclassical & Mid-Century Design with  
21<sup>st</sup> C. Modern Luxe Finishes

## Statement

This luxury New York apartment on Manhattan's upper west side will be formal, sophisticated, elegant and uncluttered, characterized by intelligently collected and carefully layered furnishings and artwork. The space emphasizes a merging of modern elements and forms with traditional motifs and finishes, and will act as a shrine to modern art and furnishings, while employing elements of Neoclassical architecture in a modern, streamlined way that pays homage to the 15 Central Park West building's architectural style.

## Color Palette & Furnishings

A primarily monochromatic color palette with warmer-toned neutrals and pops of color will complement the couple's art collection and help emphasize furniture pieces that are selected for both their comfort and sculptural detailing.

Classic furnishings will be used, as appropriate, in tailored and streamlined versions, while other furnishings will have design foundations in mid-century modern furniture and sculptures.

Spaces will have a more masculine feel - detailed with luxe finishes and deep wood tones that are down to earth, yet sophisticated. Private spaces will have a refined, yet relaxed, atmosphere that maintains the same level of sophistication as the other spaces, but with an intimate, family-friendly feel, to accommodate visits from children and grandchildren.



*Residential*

# Luxury Town Home

## Floor Plan



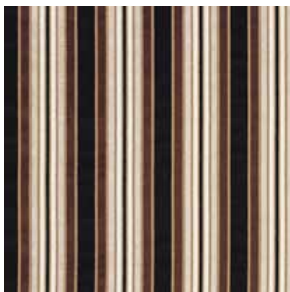
### Legend

- A Formal Entryway
- B Entryway Closet
- C Family Room/Study
- D Living Room
- E Dining Room
- F Office
- G Kitchen
- H Master Bedroom
- I Master Dressing Room
- J Master Bathroom
- K Guest Bathroom
- L Guest Bedroom
- M Guest Bathroom
- N Guest Bedroom
- O Powder Room
- P Laundry
- Q Butler's Pantry

*Residential*

# Luxury Town Home

## Family Room



Benches



Draperies



Sofa



Flooring

*Residential*

# Luxury Town Home Family Room Concept Board



Usuyuki  
Jasper Johns - 1982



*Residential*

# Luxury Town Home

## Guest Suite



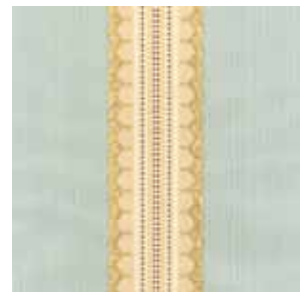
Benches



Draperies



Side Chair

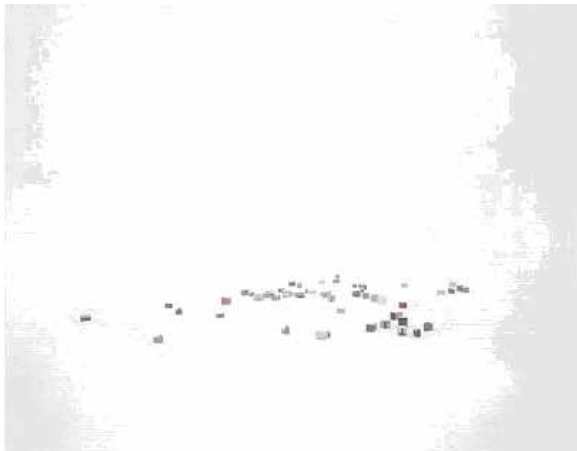


Duvet

*Residential*

# Luxury Town Home

## Guest Suite Concept Board



Invisible City, from Snowbound  
Lisa M. Robinson



Masland Charmant  
Wool Carpet



*Residential*

# Master Suite Redesign

Granger, Iowa



## Design Intentions

Create a relaxing, serene, peaceful master suite where the client can escape after a long day of work.

Design an elegant and refined yet casual and comfortable environment.

Select furnishings and finishes rooted in tradition with updated, modern lines.

Employ a warm color scheme inspired by the Autumn countryside with hues of burgundy, plum, cinnamon, and gold with hints of yellow green.

Create interest through textural variety in materials.

Incorporate natural materials such as wood, stone, and natural fibers like cotton, linen and wool

*Residential*

---

JILLIAN F. WITHEE | Design Portfolio

# Master Suite Redesign

## Concept Board



*Residential*

# Sherwin-Williams STIR Student Design Contest



The color concept for this open plan kitchen and dining room was inspired by the home's proximity to the sea, and the homeowner's love of sailing. The intent was to create a calm, serene, elegant space that reflected the exterior environment and location of the home through the use of cool blue-violet, blue-green and creamy white, inspired by the hues of the ocean, the sky, and the seashells scattered along the shore.

*Color Theory*

---


JILLIAN F. WITHEE | Design Portfolio

# Sherwin-Williams STIR Student Design Contest

A rich, high gloss, inky blue was chosen for the island in order to ground the kitchen space, while the perimeter cabinets were painted a luminous ivory. The tray ceiling in the kitchen is a very pale shade of aqua, while the lower ceiling is a silvery, muted sage. In the dining room, the palette shifts from blue greens to softer shades of blue violet inspired by the evening sky. The walls are painted two shades of the same hue for a subtle transition from dark to light.



## Color Sentence

	Granite Peak SW6250
	Aleutian SW6241
	Glimmer SW6476
	Silvermist SW7621
	Inkwell SW6992
	St Barts SW7641
	Cotton White SW7104

*Color Theory*

# Color Branding Project



The Natural Color System (NCS) was researched and used as a tool to re-brand an internationally recognized brand by applying color to a showroom space.

The company selected for re-branding was Louis Vuitton, primarily known for its high end luggage and hand bags. Louis Vuitton is synonymous with luxury, opulence, quality, and indulgence. Using the NCS color space, color wheel, and color triangle, a palette of rich mahogany, deep garnet, soft rose and butter cream was selected in order to create a sensual, feminine and luxurious shopping experience.

The new color scheme was applied to the image of the existing Louis Vuitton showroom using Adobe Photoshop.

*Color Theory*

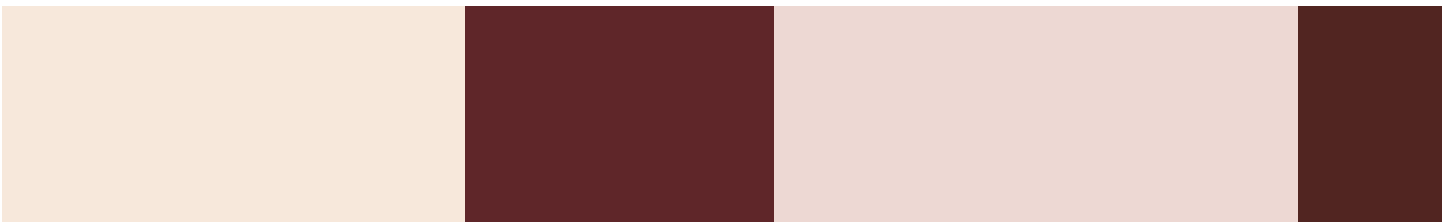
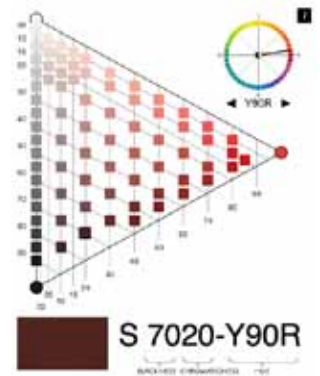
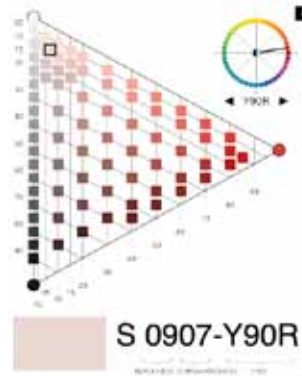
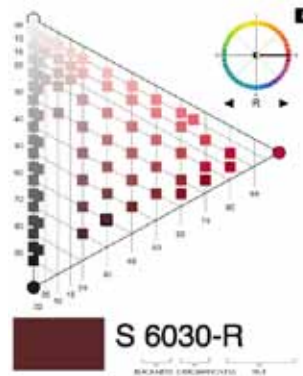
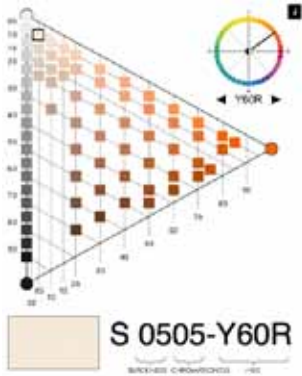
---

JILLIAN F. WITHEE | Design Portfolio

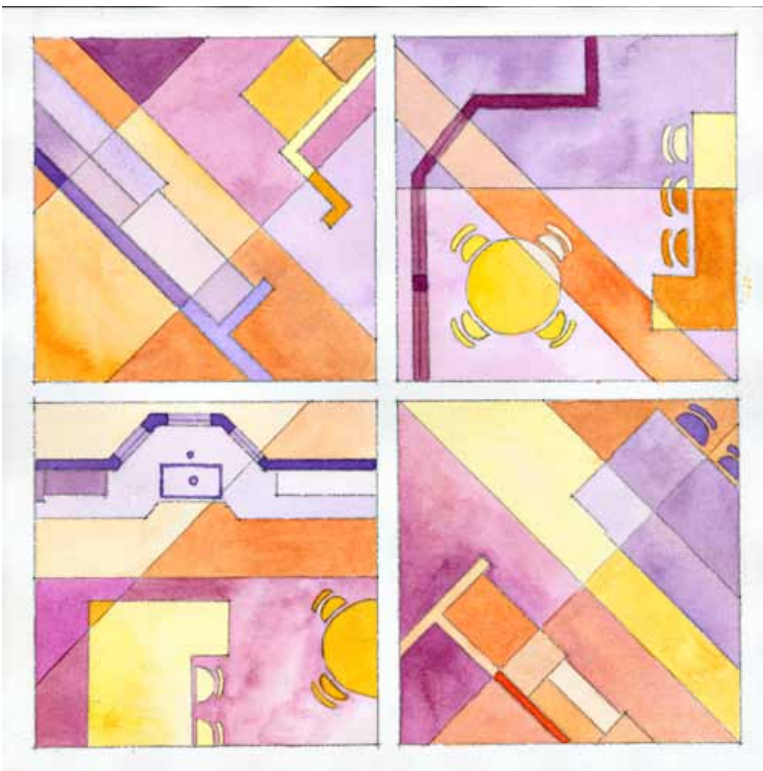
# Color Branding Project



## NCS Color Triangles & Color Sentence



# Watercolor Floor Plan



An original floor plan of a residential kitchen remodel was used as the basis for exploring traditional color theory principles through watercolor. The floor plan was cropped, simplified to its basic elements, and transformed to place emphasis on circulation patterns and lighting. A double split-complementary color scheme was chosen: violet, blue-violet, yellow, and yellow-orange. The choice of color was inspired by a flowering annual popular in the Midwest, Lantana, which would be visible through the kitchen window, growing in pots on the homeowner's patio. The colors also represent the vibrancy and energy of the primarily female household.

*Color Theory*

JILLIAN F. WITHEE | Design Portfolio



# Residential Kitchen Design

West Des Moines, Iowa

Traditional kitchen remodel in West Des Moines, Iowa. Features include raised panel cabinet doors, stacked uppers with glass fronts, integrated appliances, and a large island with furniture base molding.

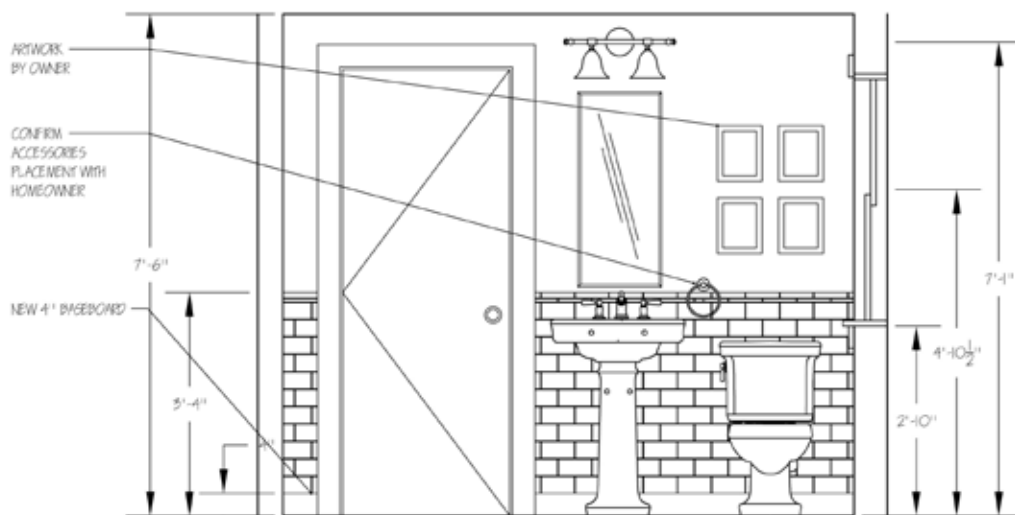
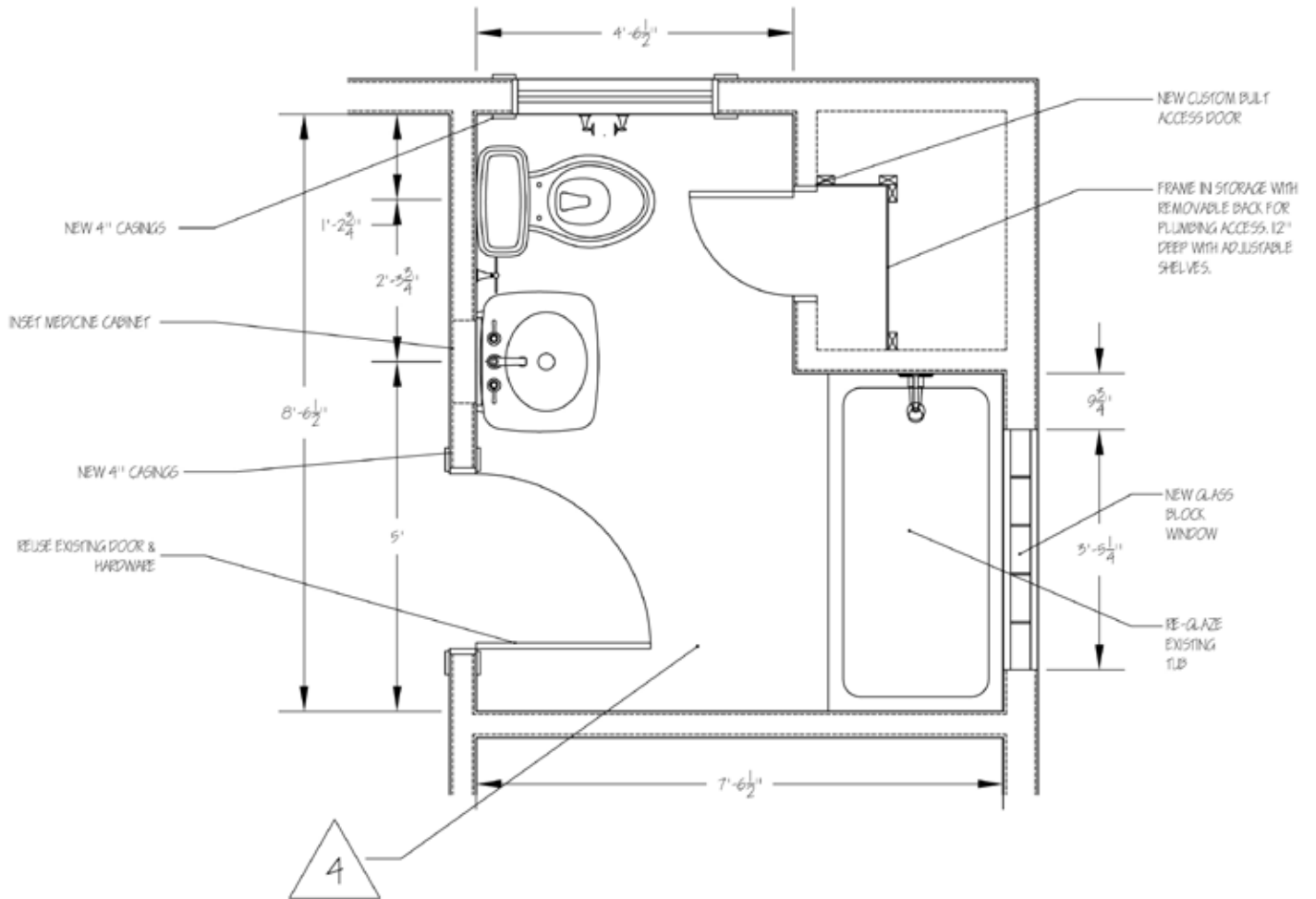


*Kitchen Design*

JILLIAN F. WITHEE | Design Portfolio

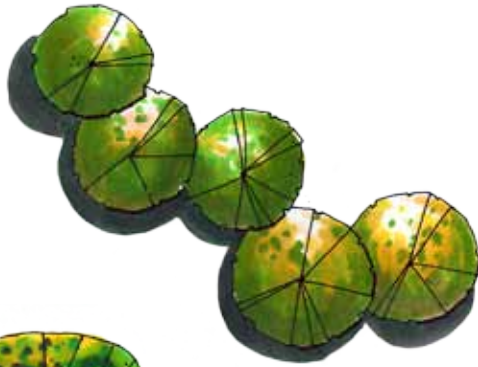
# Cottage Bathroom Remodel

Des Moines, Iowa



*Bathroom Design*





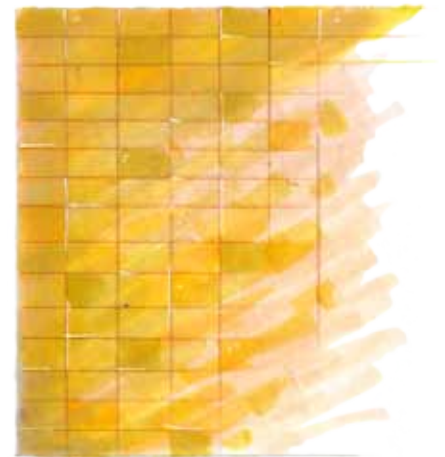
Foliage



Figures



Furniture



Materials



*Hand Rendering*